



图5 卷材施工



图6 卫生间 JS101 涂料自检



图7 压条施工



图8 阴角加强层

工程图集

节点图

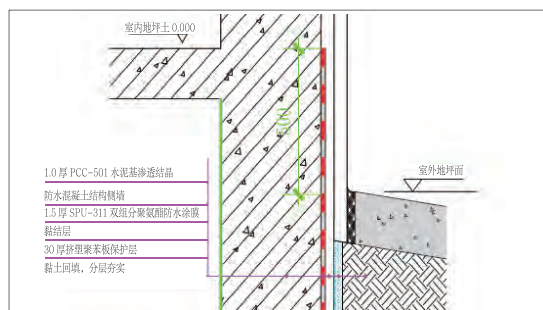


图1 侧墙防水层上翻示意

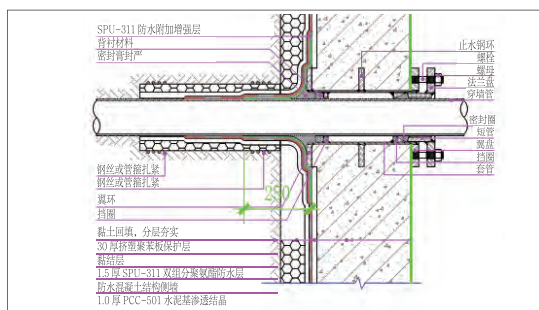


图2 侧墙穿墙管细部节点处理示意

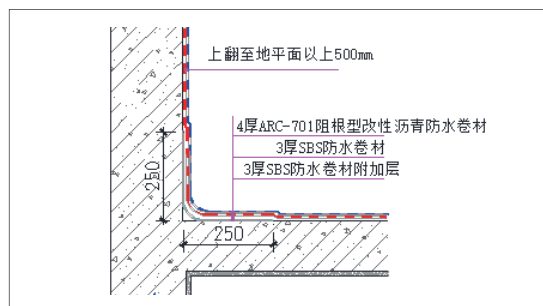


图3 种植屋面（地下室顶板）阴角防水上翻示意

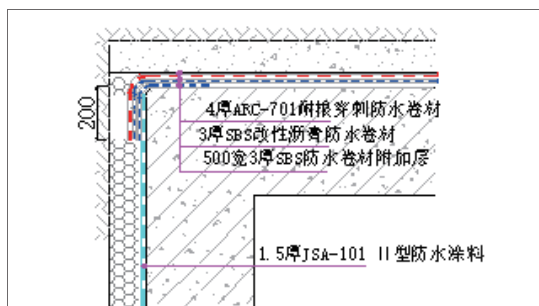


图4 地下室顶板与侧墙阳角防水示意

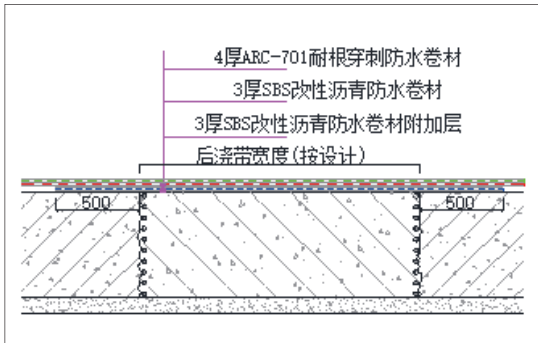


图5地下室顶板后浇带防水示意

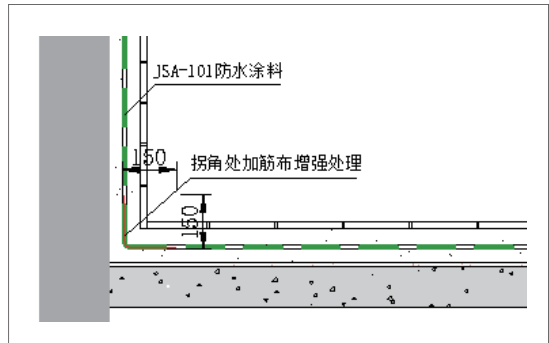


图6卫生间墙地面交接处附加增强做法

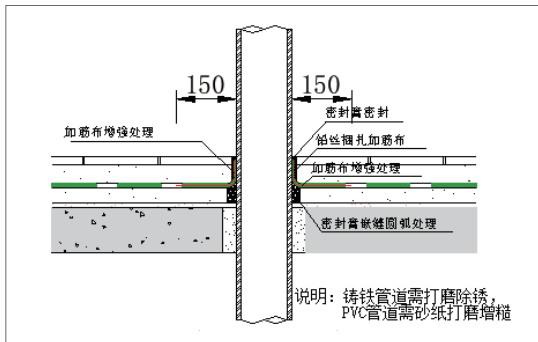


图7管根处防水做法

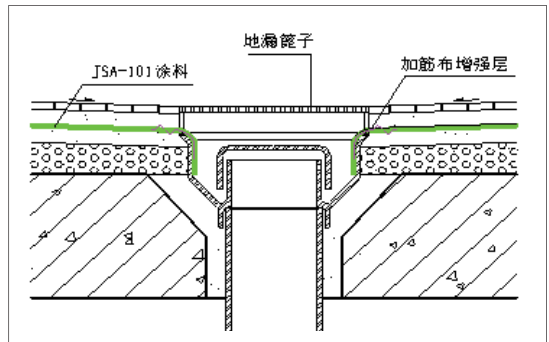


图8地漏防水做法

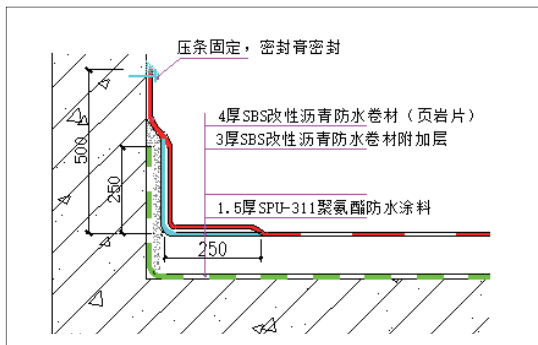


图9女儿墙阴角防水示意

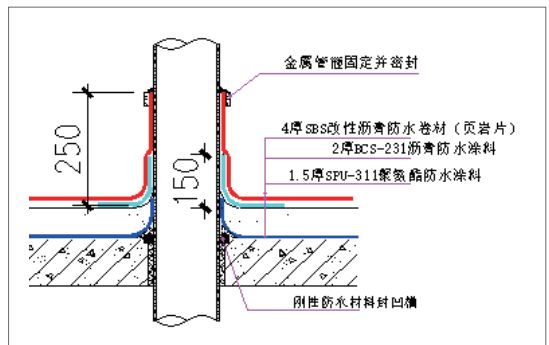


图10穿屋面板管根防水示意

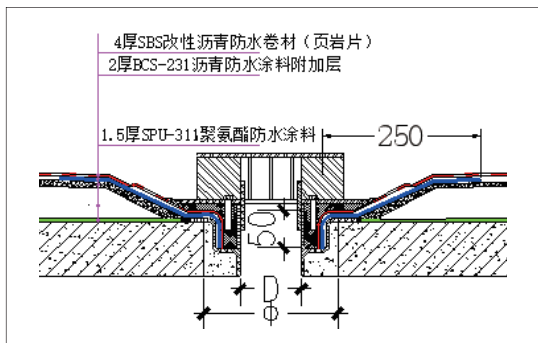


图11屋面板直式落水口防水示意

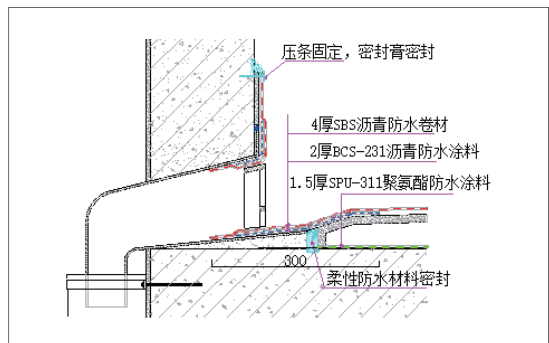


图12屋面横式落水口防水示意